

## Singulate Straight Tab Routed Panels

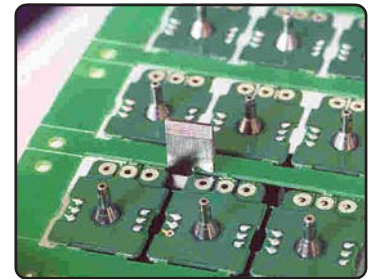
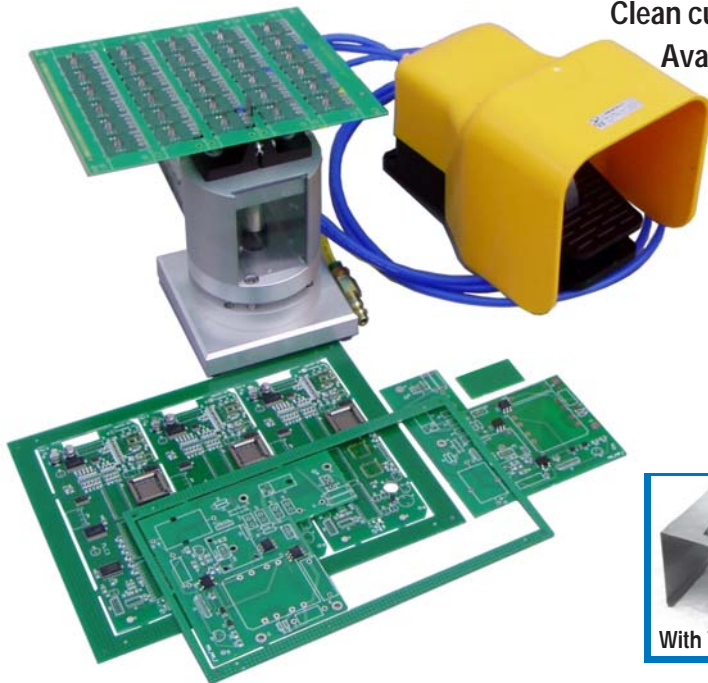
Store cut tabs inside tool for discarding at operator convenience.

Clean cut - requires no rework for deburring PCB edges.

Available with 3 blade types and choice of support dies.

Easy blade change in under 5 minutes.

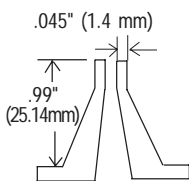
Cut tabs up to .324"



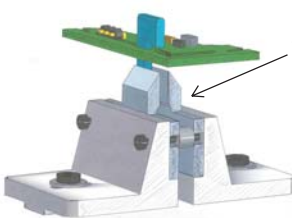
Description	Part Number
N100T + 3 blades & Table	97-N100T
N100S + 3 blades	97-N100s
N100 + 1 blade	97-N100

Part Number for Sharp Support Die 97-N101

The N100 PCB Nibbler for tab routed printed circuit cards is ideal for low to medium volume production or as back up to your expensive capital equipment. Tabs are cleanly cut by placing them under the blade and stepping on the foot pedal. All that is needed is 80 to 100 PSI factory air. This tool is available with a standard support die or with the new sharp blade die. The material from the tab is stored inside a compartment of the tool and can be easily removed at operator convenience. Just lift the clear front cover of the tool housing and discard the scrap. No secondary deburring operation is needed.



Standard Support Die



Sharp double knife support die for clean tab cut off.

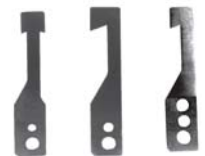


**Blades** are available for a variety of tab sizes and routing thicknesses. Standard thicknesses are .062" (1.5mm), .093" (2.375mm) and .120" (3mm). The standard blade will cut tabs of .189" (4.8mm). For longer tabs the .324" (8.22mm) blade can be used. A double edged blade is available for applications where it is necessary to cut in both directions. Standard blades are made of high speed tool steel. For longer life on thinner routed sections, blades are also available in Titanium. Blades can be ground to custom dimensions on request.

Dimensions: 7x4.5x4.5" (170 x114 x114 mm)

Weight: 6 Lbs

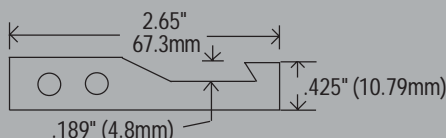
Air: 80-100 Psi



### Blades

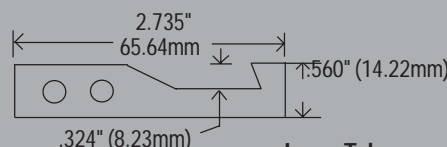
Standard blades available at .063", .093. and .120"

For Blades made of titanium add - T to part number.



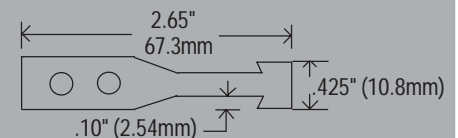
Standard

- 97-0102N .062" (1.5mm)
- 97-0105N .093" (2.375mm)
- 97-0106N .120" (3mm)



Long Tab

- 97-0202N .062" (1.5mm)
- 97-0205N .093" (2.375mm)
- 97-0206N .120" (3mm)



- 97-0302N .062" (1.5mm) Double Edge
- 97-0305N .093" (2.375mm)
- 97-0306N .120" (3mm)